

# ARMSTRONG

## SERIES 4270



FILE NO:	42.10
DATE:	March 1, 1998
SUPERSEDES:	42.10
DATE:	Dec. 15, 1992

*Motor Mounted Centrifugal Pumps*

---

# Motor Mounted Centrifugal Pumps – Series 4270

## Applications

- Cooling Towers
- HVAC
- General Purpose

## Features that ensure performance excellence!

### **Volute**

*Radially-split volute can be left in the line while servicing the pump, eliminating needless disconnecting of pipes. Tapped openings are provided for venting, draining and gauge connections.*

### **Impeller**

*High strength engineered resin impeller reduces axial thrust to a minimum, ensuring smooth performance and long life.*

### **Motor**

*The motor is equipped with heavy-duty, permanently lubricated ball bearings adequately rated to accommodate impeller radial loads and residual hydraulic thrusts. Designed to operate at 3600 rpm. (1800 rpm Optional)*

### **Mechanical Seal**

*Self-lubricating, prevents liquid seepage. A carbon face rotating against a stationary ceramic seat provides positive sealing up to full design pressure. (Type 21)*

### **Adaptor**

*Aluminum die cast, with integral support foot, delivering lightweight, durable construction.*

### **Shaft**

*Motor shaft extends through to impeller, eliminating intermediate bearing bracket for close coupled design.*

### **Back Pull-Out Design**

*Eliminates the need to break piping connections when servicing the pump. The motor, with bracket and impeller attached, can be easily withdrawn from the volute after moving the volute capscrews.*

## Materials of Construction

Part Name	Bronze Fitted Pump	All Bronze Pump
Volute	Cast Iron	Bronze
Volute Cap Screws	Steel	
Impeller	ULTEM	
Mechanical Seal: (Type 21)		
Insert	Carbon	
Seat	Ceramic	
Bellows	Viton	
L-Cup	Viton	
Retainer	Stainless Steel	
Spring	Stainless Steel	
Motor/Bracket	Aluminum	
Faceplate	Stainless Steel	

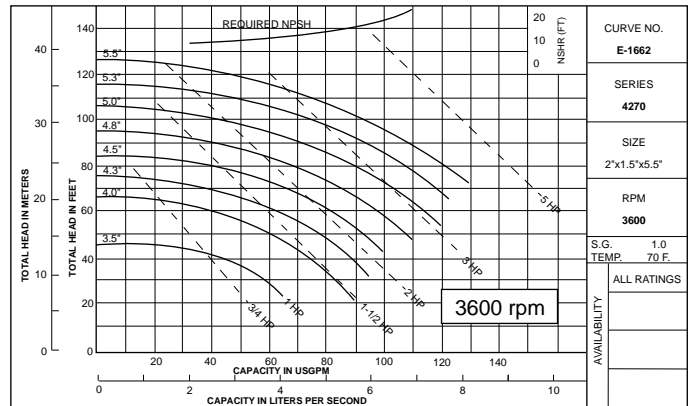
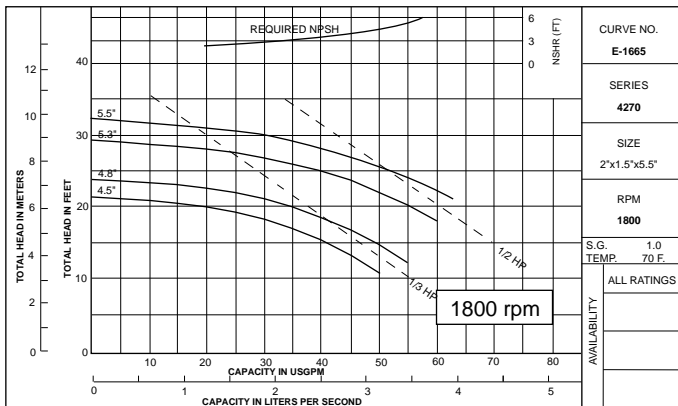
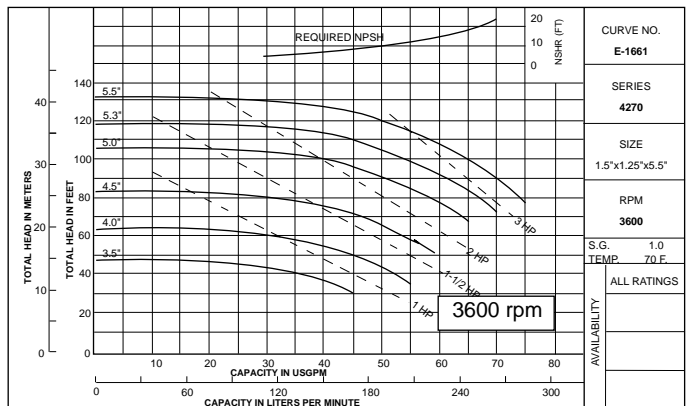
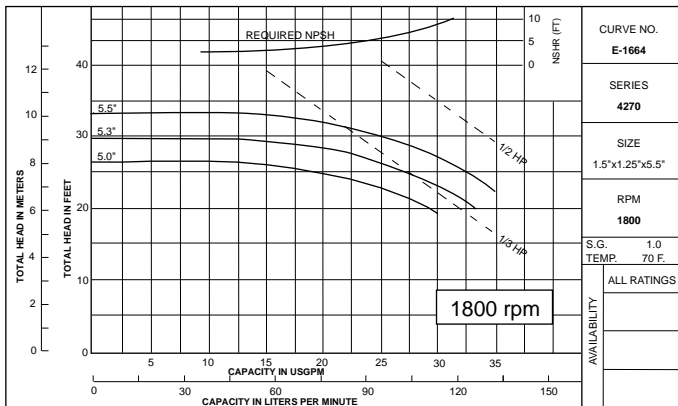
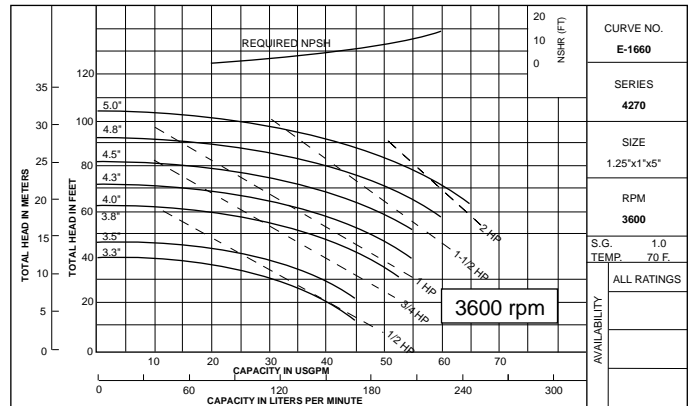
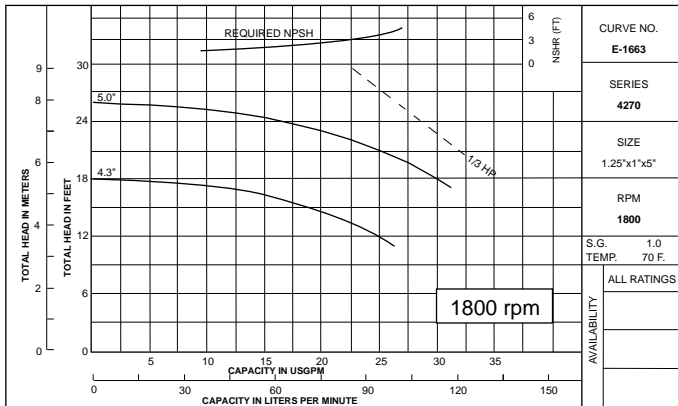
## Optional Equipment

Seal Flushline 50 Cycle
----------------------------

## Design Information

Pump Sizes "Suction"	1-1/4", 1-1/2", 2"
Capacity Range (3600 rpm)	130 USgpm
Head Range (3600 rpm)	130' hd
Maximum Working Pressure	150 psig
Maximum Operating Temperature	275°F

# Performance Curves – 4270



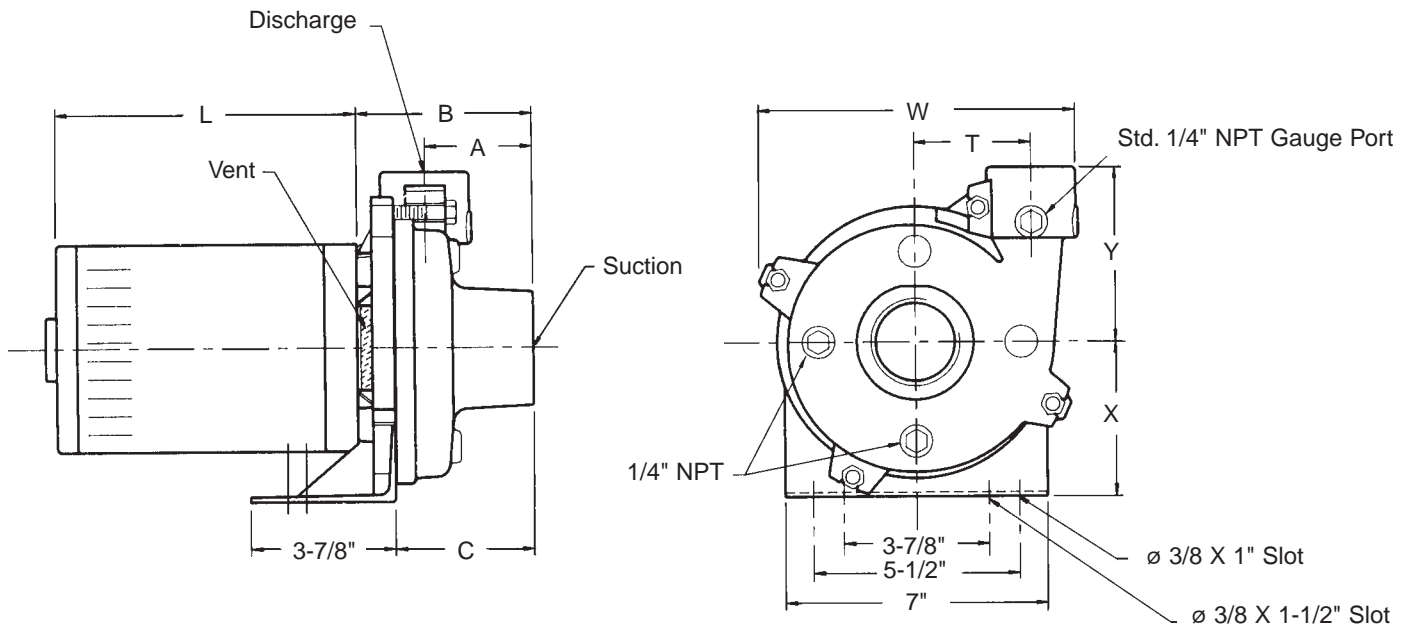
## Typical Specifications

Furnish and install, as shown on the Plans and Specifications, an Armstrong Series 4270 End Suction Motor Mounted Centrifugal Pumping Unit suitable for 150 psig working pressure with radially-split \_\_\_\_\_ casing, ULTEM Impeller, 416 Stainless Steel Shaft and single inside-type 21 Mechanical Seal. The driving motor shall be horizontal, solid shaft, squirrel cage induction motor with NEMA C Flange and \_\_\_\_\_ enclosure, suitable for operation on a \_\_\_\_\_ volt, \_\_\_\_\_ cycle phase power supply. The complete unit shall be suitable for \_\_\_\_\_ as shown on the Pump Schedule, or for \_\_\_\_\_ the following: service \_\_\_\_\_, capacity \_\_\_\_\_ USGpm (l/second), total head \_\_\_\_\_ feet (metres), liquid \_\_\_\_\_, temperature \_\_\_\_\_ °F (°C), viscosity \_\_\_\_\_ SSU, pump size \_\_\_\_\_, speed \_\_\_\_\_ rpm, motor rating \_\_\_\_\_ HP.

# Pump Data

Suction X Discharge	1-1/4" X 1" (mm)	1-1/2" X 1-1/4" (mm)	2" X 1-1/2" (mm)
<b>A</b>	2-7/8" (73)	2-7/8" (73)	2-7/8" (73)
<b>B</b>	4-3/4" (121)	4-3/4" (121)	4-3/4" (121)
<b>C</b>	3-13/16" (97)	3-13/16" (97)	3-13/16" (97)
<b>W</b>	8-1/4" (210)	8-1/3" (212)	8-1/2" (216)
<b>T</b>	3-1/8" (79)	3-1/8" (79)	3-1/8" (79)
<b>X</b>	4-3/16" (106)	4-3/16" (106)	4-3/16" (106)
<b>Y</b>	4-3/4" (121)	4-3/4" (121)	4-3/4" (121)

Motor H.P.	1/3	1/2, 3/4, 1, 1-1/2, 2	3	5
<b>L</b>	7-7/8" (200)	8-3/4" (222)	9-3/8" (238)	11-3/8" (289)



All pump sized are provided with NPT screwed connections.  
 \*For exact dimensions please write factory.

**S.A. Armstrong Limited**  
 23 Bertrand Avenue  
 Toronto, Ontario  
 Canada, M1L 2P3  
 Tel.: (416) 755-2291  
 Fax: (416) 759-9101

**Armstrong Pumps Limited**  
 Peartree Road, Stanway  
 Colchester, Essex  
 United Kingdom, CO3 5JX  
 Tel.: 01206-579491  
 Fax: 01206-760532



**Armstrong Pumps Inc.**  
 93 East Avenue  
 Buffalo, New York  
 U.S.A., 14120-6594  
 Tel.: (716) 693-8813  
 Fax: (716) 693-8970

**Armstrong Darling Inc.**  
 2200 Place Transcanadienne  
 Montreal, Quebec  
 Canada, H9P 2X5  
 Tel.: (514) 421-2424  
 Fax: (514) 421-2436

